



East Asian Sub-Regional APASWE Webinar (World Social Work Month Event)

SOCIAL SOLIDARITY IN THE NEW GLOBAL AGENDA AND THE COVID-19 PANDEMIC IN EAST ASIA

WHAT CAN SOCIAL WORK EDUCATION DO?

DATE & TIME

March 26th (Fri) 2021, 2pm in Beijing and 3pm in Seoul & Tokyo

PROGRAM (2 hours)

All in English

Opening remarks and introduction (10 min)

- by David Rose (University of Melbourne, APASWE Secretary)

Webinar outline and rationale (10 min)

- by Viktor Virag (Nagasaki International University, APASWE Board Member)

Country reports (in alphabetic order)

- *China* (20 min) by Joshua Shen (Shanghai Normal University)
- *Japan* (20 min) by Junko Wake (Tokyo Metropolitan University)
- *Korea* (20 min) by Jung-won Lim (Kangnam University)

Discussion and Q & A (30 min)

- Moderator : Takashi Fujioka (Japan College of Social Work, APASWE Treasurer)
& Viktor Virag (Nagasaki International University, APASWE Board Member)

Concluding comments and closing remarks (10 min)

- by Zulkarnain Hatta (Lincoln University College, APASWE President)

REGISTRATION by March 24th (Wed) midnight Tokyo time

<https://forms.gle/EQNKgbLJp5BPWwSs8>

* Zoom link will be sent via email by March 25th (Thu).

COORDINATOR& INQUIRIES

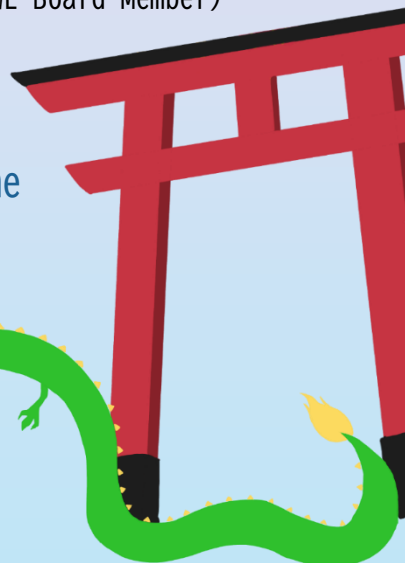
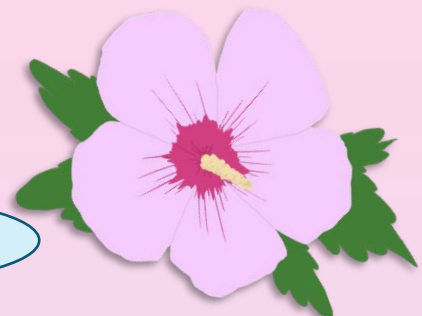
virag@niu.ac.jp

Viktor Virag (Nagasaki International University, APASWE Board Member)

SPECIAL
SUPPORT

Japanese Association for Social Work Education (JASWE)

& Japan Society for the Promotion of Science (JSPS) Grant-in-Aid for Scientific Research (B) *Theoretical and Empirical Study on Glocal Social Work in Multicultural Care Systems* (No. 19H01590)



STRENGTHENING SOCIAL SOLIDARITY & GLOBAL CONNECTEDNESS

WORLD SOCIAL WORK DAY

#WSWD2021



APASWE

Asian and Pacific Association for Social Work Education